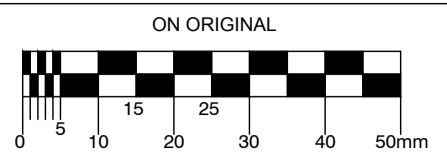


© COPYRIGHT OF THIS DRAWING IS RESERVED BY DBFL CONSULTING ENGINEERS. NO PART SHALL BE REPRODUCED OR TRANSMITTED WITHOUT THEIR WRITTEN PERMISSION.



- NOTES:
- GENERAL NOTES:**
1. ALL CO-ORDINATES ARE TO IRISH TRANSVERSE MERCATOR
  2. ALL LEVELS ARE TO ORDANCE DATUM MALIN HEAD
  3. ALL DIMENSIONS IN METERS UNLESS SPECIFIED OTHERWISE
  4. DO NOT SCALE FROM DRAWING

- DRAWING NOTES:**
- TRAIN FREQUENCIES:**
- DART SERVICES -**  
Every 10 - 20 mins or better
- DUBLIN / DUNDALK / NEWRY SERVICE -**  
Three services (Weekdays)  
Approx. Every 1 - 2 hours (Weekends)

ORDNANCE SURVEY IRELAND LICENCE  
No EN 0017917  
© ORDNANCE SURVEY IRELAND  
GOVERNMENT OF IRELAND

REV.	DATE	DESCRIPTION	BY	CHKD.
A	09/10/19	SHD STAGE 3 SUBMISSION	IC	NGC

**PLANNING**

DESIGNED	NGC	PREPARED	PJC
DATE	APR 2019	CHECKED	DJR

**DBFL**  
Dublin Office: Ormrod House,  
Upper Ormrod Quay, Dublin 7, Ireland.  
PHONE: +353 1 400 4000  
FAX: +353 1 400 4050

WATERFORD OFFICE: Unit 2, The Chandlers,  
1-2 O'Connell Street, Waterford, Ireland.  
PHONE: +353 51 338 530  
FAX: +353 51 844 813

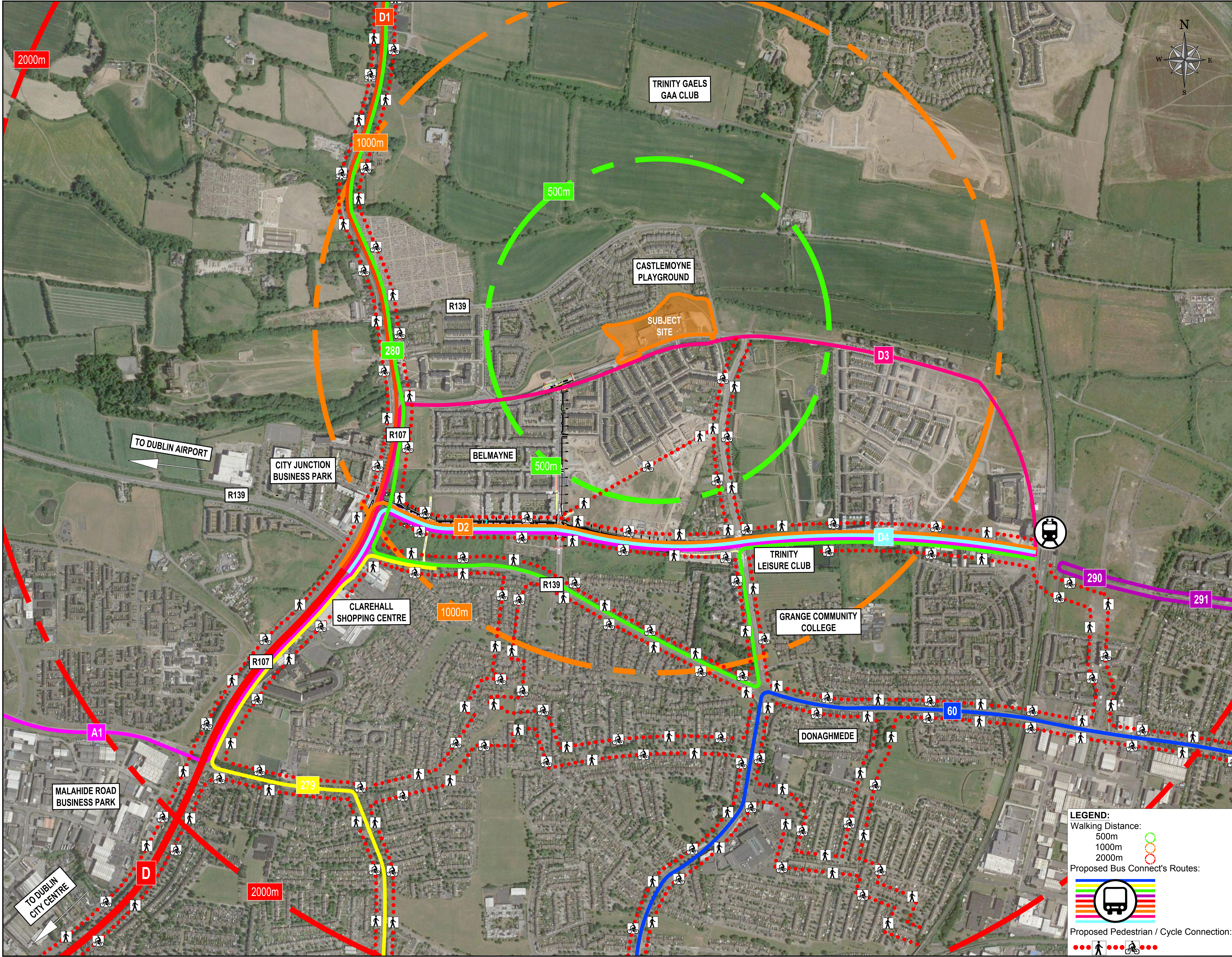
DBFL Consulting Engineers    EMAIL: info@dbfl.ie    SITE: www.dbfl.ie

PROJECT  
**PARKSIDE 4,  
PARKSIDE, DUBLIN 13**

DRG. TITLE  
**PROPOSED PUBLIC  
TRANSPORTATION LINKAGES  
PLAN**

CLIENT  
**CAIRN HOMES PROPERTIES  
LTD.**

SCALE	1:5000 @A1	FILE REF.	190011-1001
DRG. NO.	190011-1001		A



**LEGEND:**

Walking Distance:  
 500m   
 1000m   
 2000m

Proposed Bus Connect's Routes:

Proposed Pedestrian / Cycle Connection: